



COTTON USA™

THE COTTON THE WORLD TRUSTS

COTTON USA Global Economic Update - June 2018

U.S. COTTON SUPPLY & OFFTAKE

(000) 480-Pound Bales

	2017-18e	2018-19p
Beginning Stocks	2,750	4,200
Production	20,920	19,500
Imports	10	10
Total Supply	23,680	23,710
Mill Use	3,350	3,400
Exports	16,000	15,500
Total Offtake	19,350	18,900
Ending Stocks	4,200	4,700
Stocks-to-Use Ratio	21.7%	24.9%

Source: USDA-WAOB June WASDE Report.

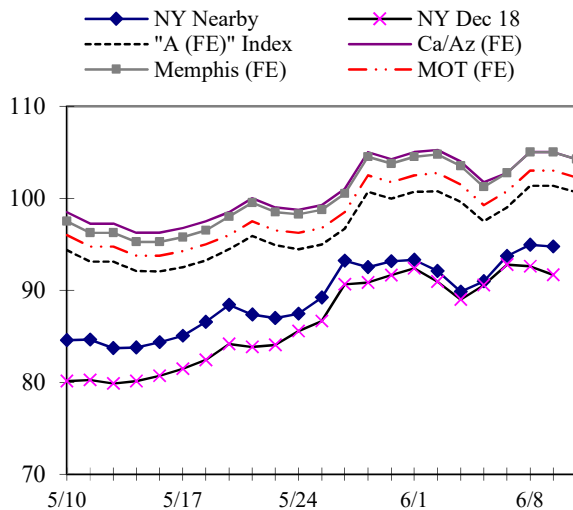
e=USDA estimate, p= USDA projection.

HIGHLIGHTS

- '18-19 World production estimated at 120.4 million bales, 790,000 bales lower than the May estimate.
- '18-19 U.S. ending stocks estimated at 4.7 million bales, 500,000 bales lower than the May estimate.
- '18-19 China production estimated at 26.5 million bales, 500,000 bales lower than the May estimate.
- '18-19 Australia production estimated at 3.8 million bales, 200,000 bales lower than the May estimate.
- '18-19 Australia exports estimated at 4.4 million bales, 100,000 bales lower than the May estimate.
- '18-19 Brazil production estimated at 9.0 million bales, 200,000 bales higher than the May estimate.
- '18-19 Brazil exports estimated at 4.9 million bales, 100,000 bales higher than the May estimate.

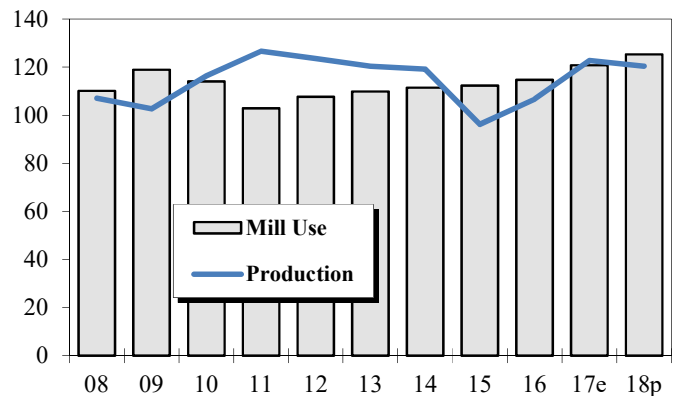
DAILY PRICES

Cents/Pound



WORLD COTTON PRODUCTION AND USE

Million Bales



2018-19 WORLD COTTON SUPPLY & OFFTAKE

Million 480-Pound Bales

	Beginning Stocks	Production	Imports	Supply	Mill Use	Exports	Ending Stocks	Stocks-to- Use Ratio
World	88.2	120.4	41.1	208.6	125.4	41.1	83.0	66.2%
U.S.	4.2	19.5	0.0	23.7	3.4	15.5	4.7	24.9%
China	41.2	26.5	7.0	74.7	41.5	0.1	33.1	79.7%
Pakistan	2.8	8.5	2.2	13.5	10.5	0.2	2.8	25.8%
India	12.5	28.5	1.5	42.5	25.2	4.3	13.0	44.2%
Central Asia	2.7	6.5	0.0	9.2	3.7	2.6	2.9	46.7%
Australia	3.2	3.8	0.0	7.0	0.0	4.4	2.5	56.8%
Brazil	8.3	9.0	0.1	17.4	3.5	4.9	9.0	107.8%
Indonesia	0.6	0.0	3.5	4.1	3.5	0.0	0.6	17.7%
Mexico	0.8	1.6	0.9	3.3	1.9	0.6	0.9	37.5%
Turkey	2.0	4.3	3.6	9.9	7.4	0.4	2.2	28.1%
Vietnam	1.2	0.0	7.7	8.9	7.5	0.0	1.4	18.5%

Source: USDA-WAOB June WASDE Report.

U.S. AND WORLD FIBER PRICES

Cents/Pound

MONTH	December Futures		US Spot 1-1/16	Mill		"A (FE)" Index	AWP	China Polyester
	Near	Far		Delivered Memphis	Far East Low U.S.			
Jan-18	75.04	71.42	77.58	NA	90.99	91.06	72.96	64.67
Feb-18	75.82	71.35	75.24	NA	88.21	88.27	69.43	65.27
Mar-18	77.91	73.05	79.57	NA	92.26	92.14	74.01	64.04
Apr-18	78.44	73.49	79.34	NA	92.89	92.24	73.69	63.51
May-18	82.80	76.63	82.40	NA	96.06	94.48	75.25	63.51

CF FAR EAST QUOTATIONS
FOR AMERICAN GROWTHS

Weekly Average in Cents/Pound

Type A (FE)

	Memphis		MOT (FE)
	Cal/Az (FE) 1 3/32"	(FE) 1 3/32"	
03-May-18	97.00	96.00	94.50
10-May-18	98.00	97.00	95.50
17-May-18	96.75	95.75	94.25
24-May-18	98.75	98.15	96.25
31-May-18	102.38	101.88	99.88
07-Jun-18	103.75	103.35	101.35

Source: Cotlook, Ltd. NA = Not Available